

Pennypack Watershed Municipalities

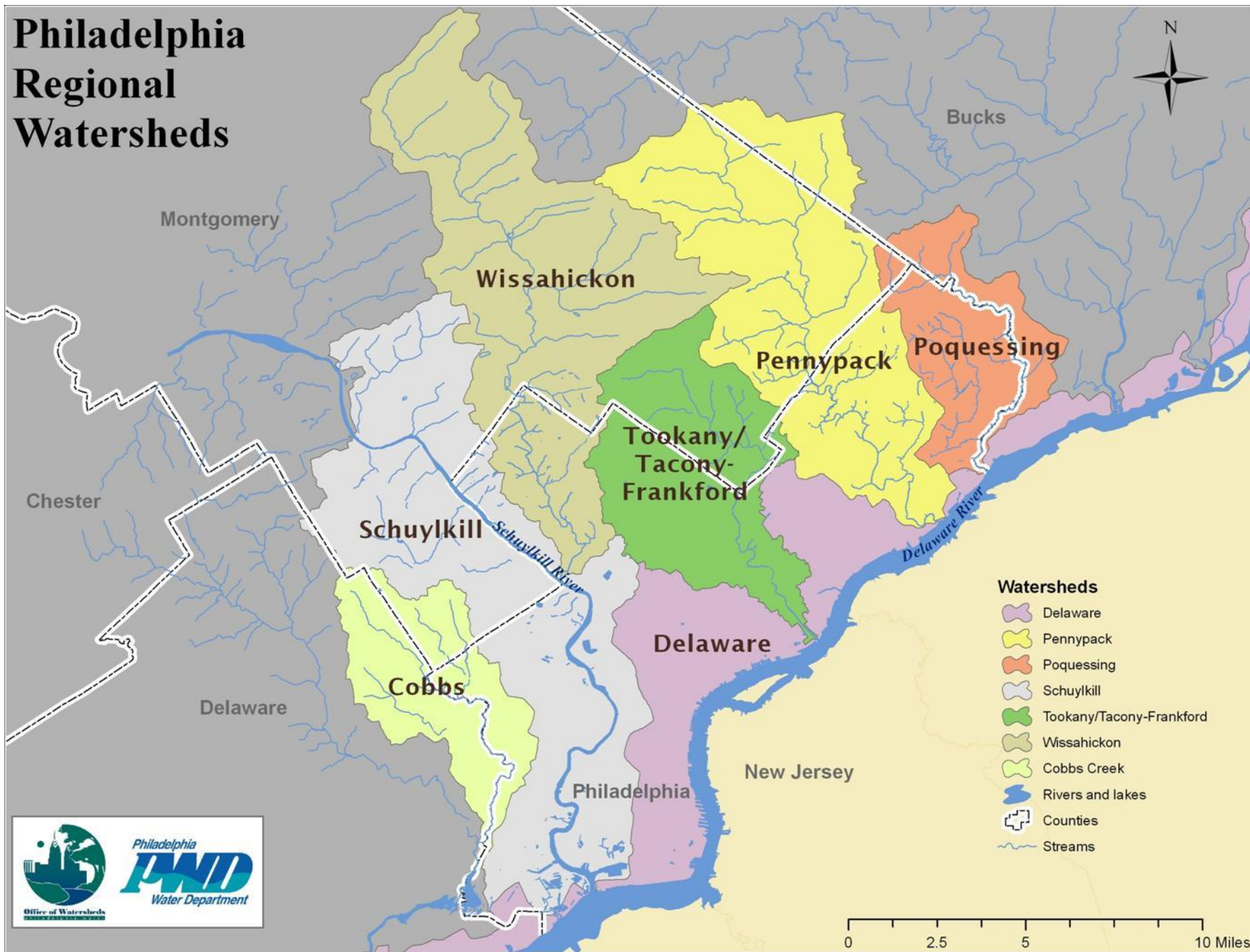


Temple University Center for Sustainable Communities

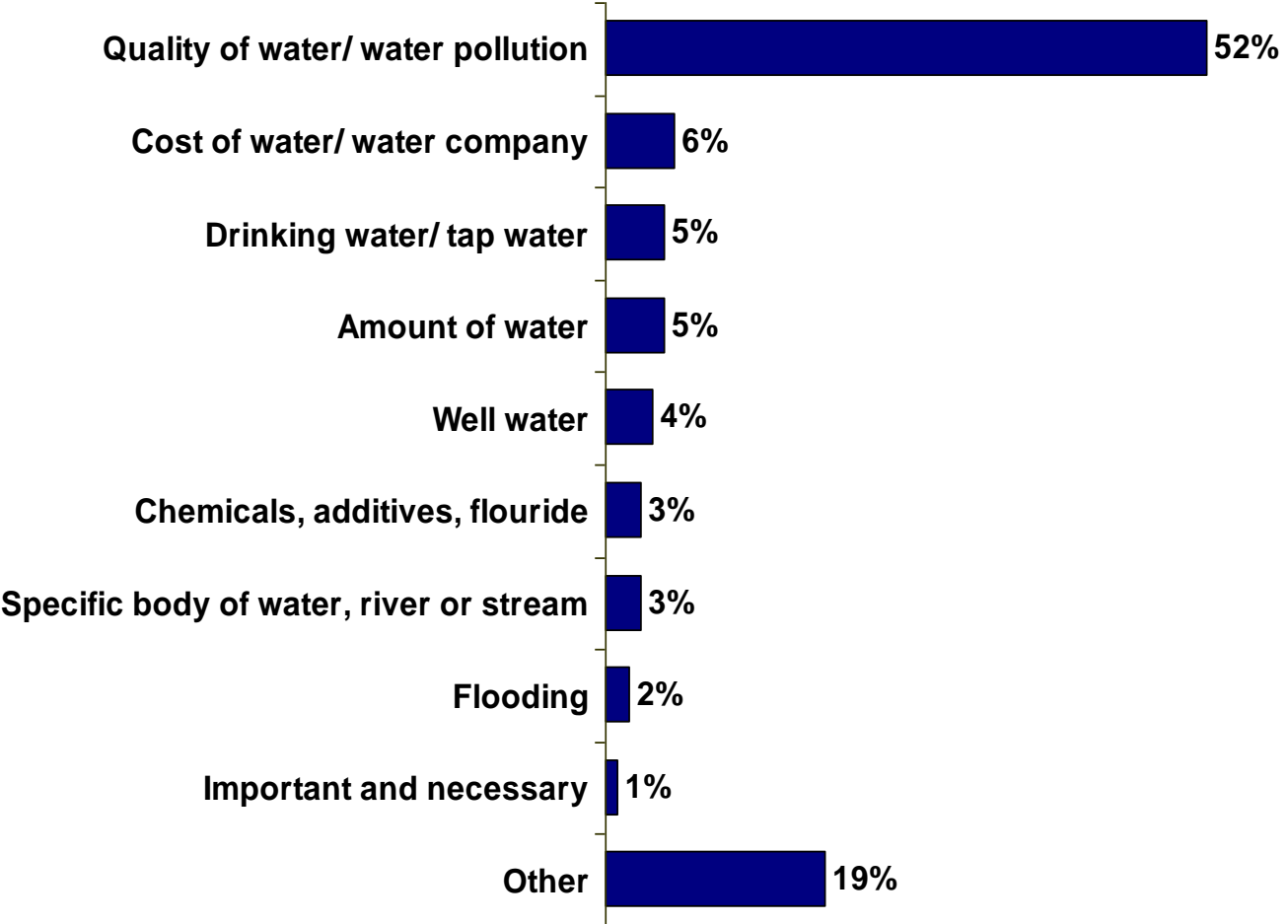
Southeastern
Pennsylvania
Communities:
*Working together for
greener
communities and
cleaner waters*



Philadelphia Regional Watersheds



Residents' Top of Mind About Water



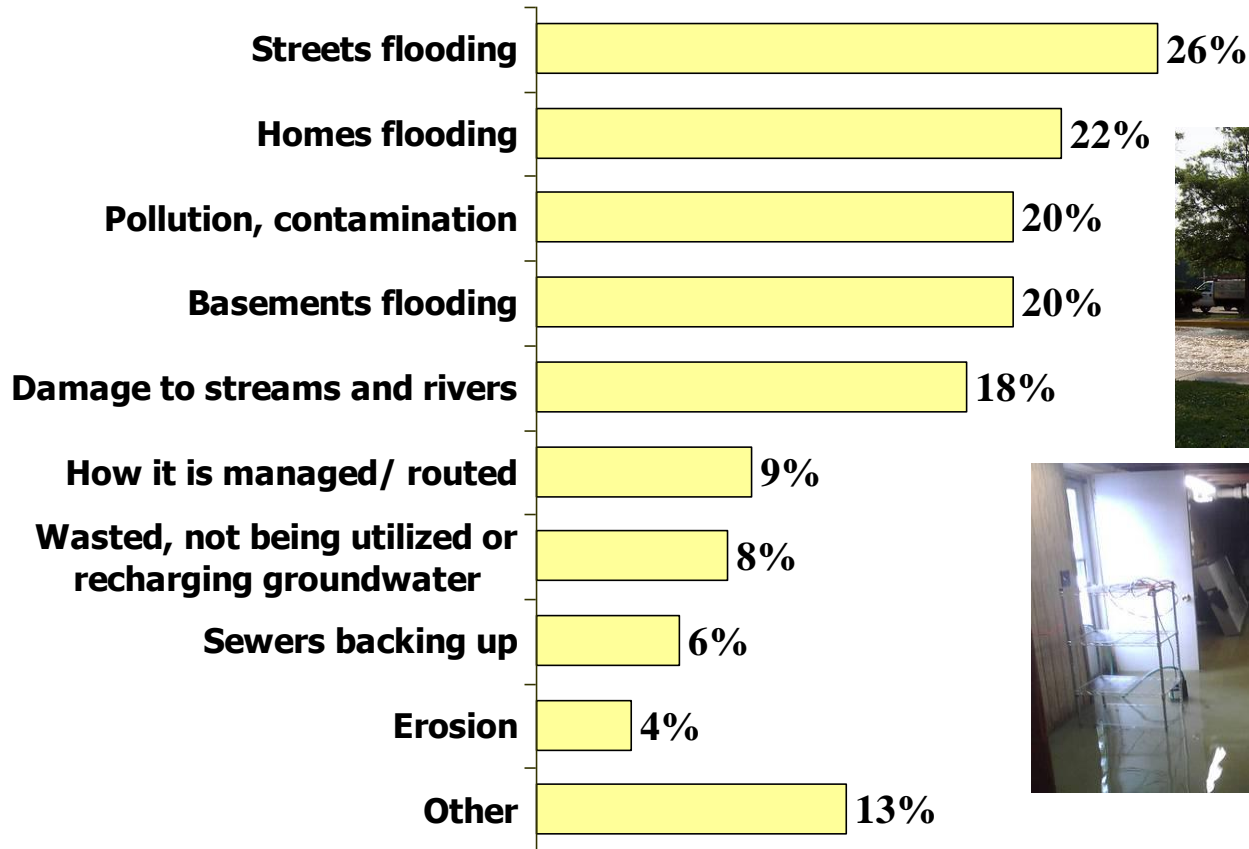
Base= 800 respondents



Q1. What is the first thing that comes to mind when you think about water in your community?



Top of Mind Concerns Include Flooding and Pollution



Base= 240 respondents expressed concern without being aided

Q6a. Do you have any concerns about storm water in your community?
What are they?

Multiple Organizations are Responsible for Managing Storm Water

- No *single* organization should be the most responsible

	Yes, have responsibility	Have MOST responsibility
Counties	96%	14%
Municipalities (townships or boroughs)	96%	28%
Developers	94%	15%
The State of Pennsylvania	92%	19%
Land Owners	85%	6%
Everyone who gets a water bill	76%	6%
The Federal Government	69%	12%

Base= 800 respondents

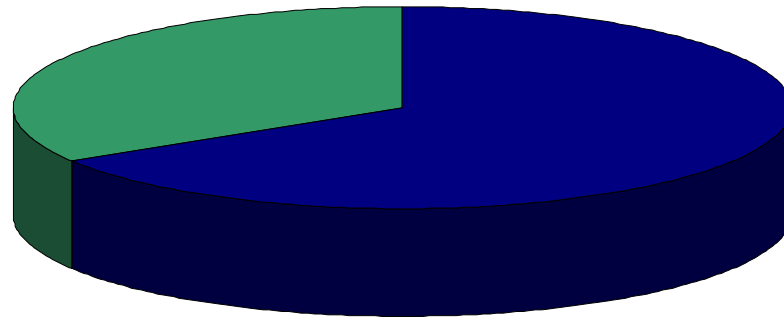


Q12. I'm going to read a list and ask after each one whether you think they have a responsibility to help manage storm water in your region? Q13. And which of those should have the MOST responsibility?



Support for Storm Water Investment is Strong

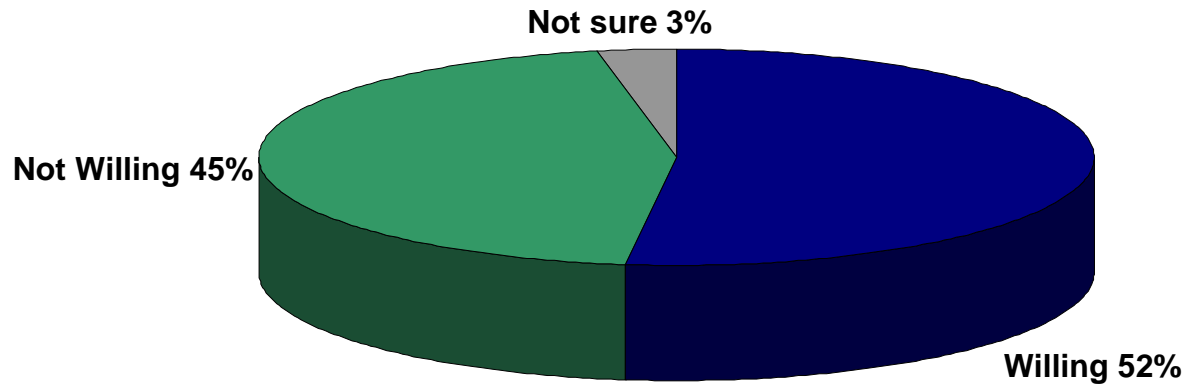
Needs less investment 34%



Needs more investment 66%

Base= 800 respondents

Over Half Willing to Pay for Storm Water Programs



Base= 800 respondents

Q20. Would you be willing or not willing to pay a few dollars each month to fund a storm water management program in your area?

Why does this matter to municipalities?

- Operations and management (water infrastructure, roads, land)
- Regulatory compliance (MS4)
- Emergency response/flooding
- Quality of life
- Planning
- Costs

What does the Watershed Partnership do for you?

- Municipal compliance with regulations
- **Comprehensive watershed planning**
- Securing funding
- Educating the community
- Sharing resources and ideas
- Precedent setting, cutting edge initiative
- Strength in numbers – don't do it alone!



What does a watershed partnership DO?

- Watershed plan
 - Goal setting process
 - ID problems
 - ID solutions
 - Cost/benefits
 - Plan Implementation
(technical, policy and financial support)



What does a watershed partnership DO?

- Collect watershed wide data that defines baseline conditions, identifies problem areas & possible solutions:
 - Chemical, physical and biological data
 - Infrastructure (bridges, outfalls, culverts, etc)
 - Channel structures (fluvial geomorphology)
 - Thermal imagery to detect illegal discharges
 - Stormwater BMPs (basins)



What does a watershed partnership DO?

- Public Education and Outreach
 - Rain barrel and rain garden workshops
 - SW basin retrofits
 - Stream walks and tours
 - Stream clean ups
 - Plantings
 - Brochures that identify watershed features, problems, and solutions



Topics

- **Overview of New Act 167 Stormwater Management Plan and Stormwater Ordinance**
 - Richard Nalbandian, Temple University's Center for Sustainable Communities
- **Stormwater Best Management Project Opportunities and PennVest/Other Funding**
 - Richard Nalbandian, Temple
 - Mindy Lemoine, Pennsylvania Environmental Council
- Discussion about Next Steps